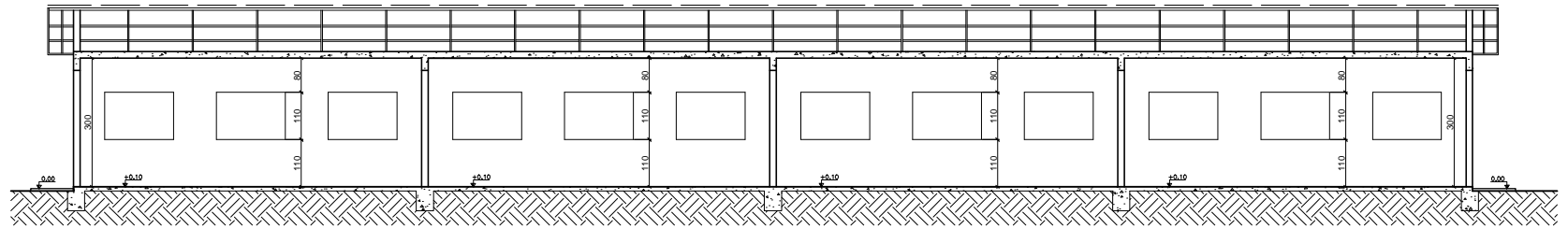


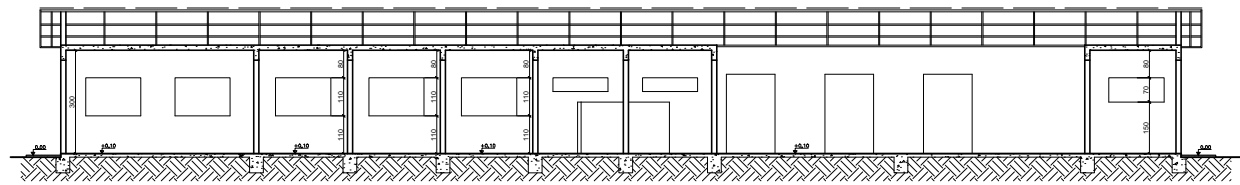
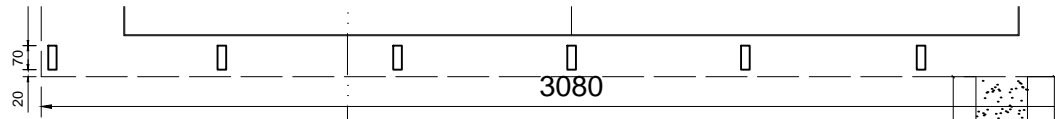
Corte A

Escala: 1/75



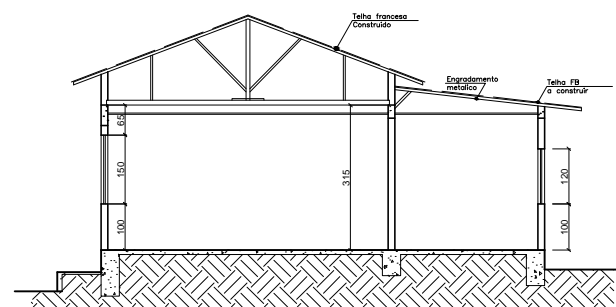
Corte B

Escala: 1/75



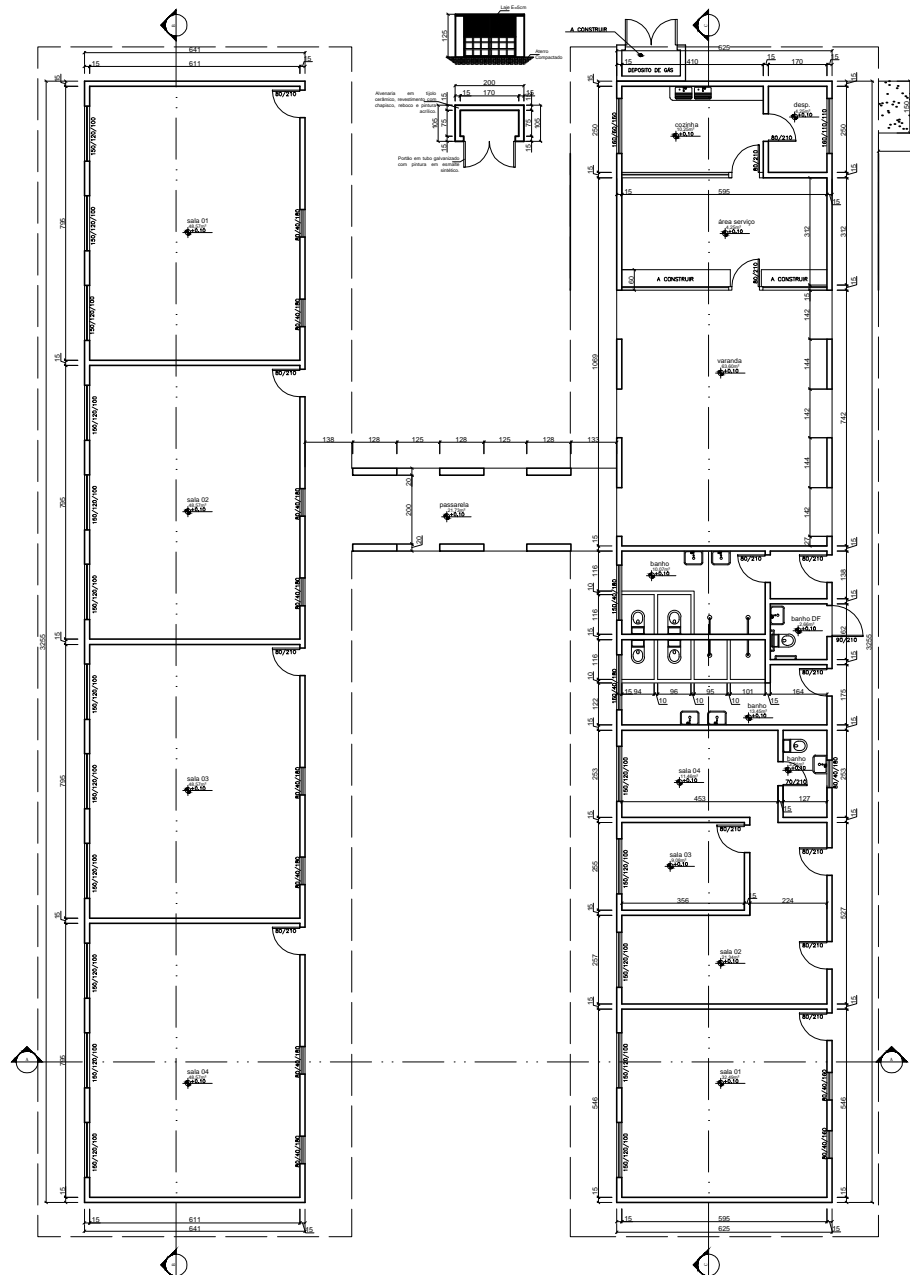
Corte C

Escala: 1/100



Corte E

Escala: 1/100

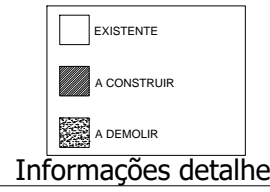


Planta Baixa Bloco 01

Escala: 1/75

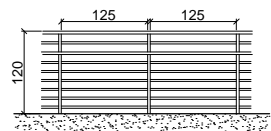
Planta Baixa Bloco 02

Escala: 1/75



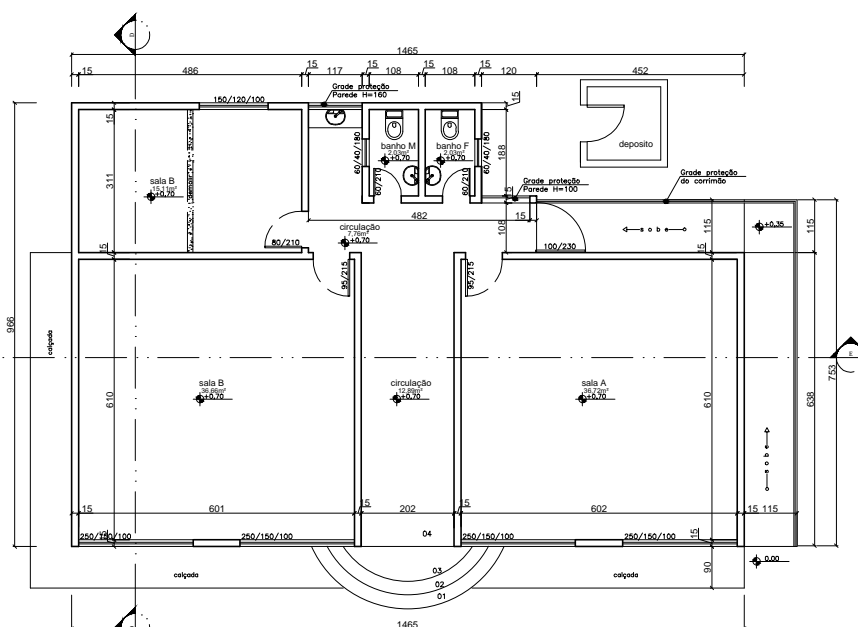
Informações detalhe

Sem escala



Guarda corpo rampa

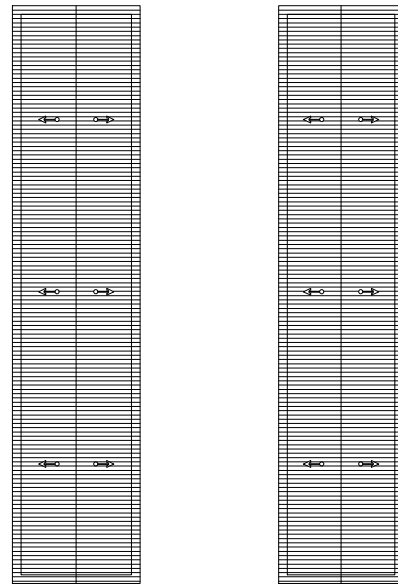
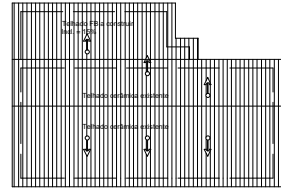
Escala: 1/50



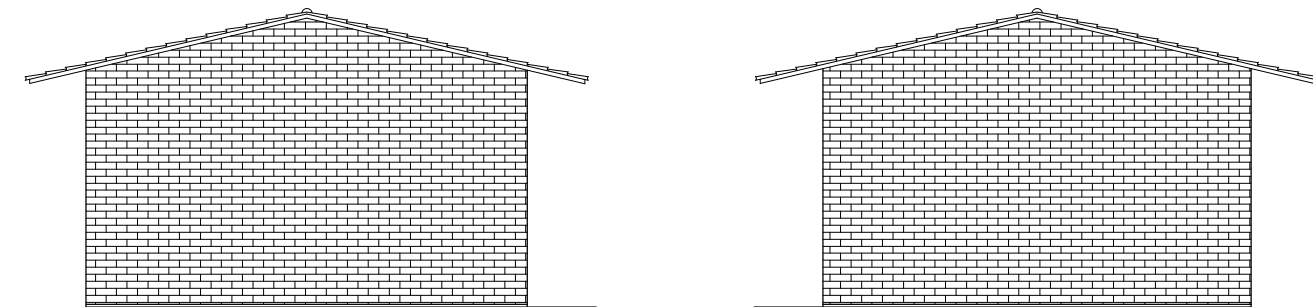
Planta Baixa Bloco 03

Escala: 1/75

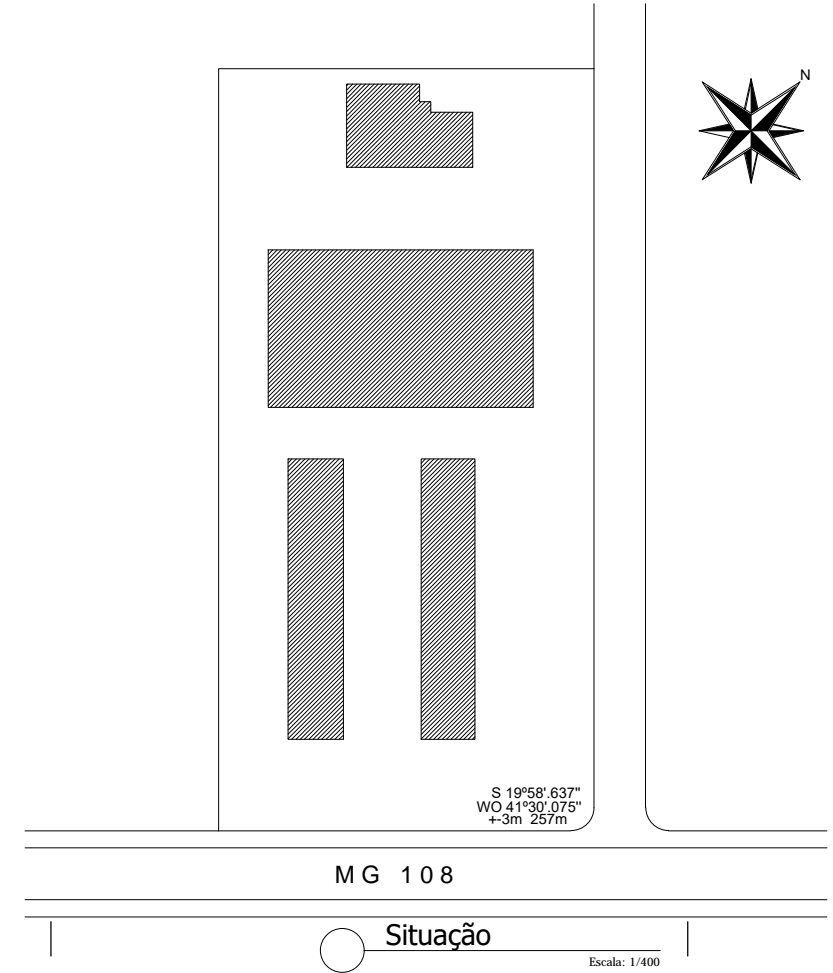
VISTO		ARQUITETURA		FOLHA
				01/02
ENDEREÇO MG 108 Esc. Mun. Jose Candido Ferreira				
Povoado de São Roque				
Mutum - Minas Gerais - Brasil				
PROPRIETÁRIO				
PREFEITURA MUNICIPAL DE MUTUM				
R.T.				
FINALIDADE	C.G.	INFORMAÇÕES		
LEGALIZAÇÃO	S 19°58' 637"	Planta bloco 01		
OBRA	WO 41°30' 075"	Planta bloco 02		
PÚBLICA	+3m 257m	Planta bloco 03		
DATA	Indicada	Corte A, B, C, D, E		
Outubro / 2022		Informações detalhe		
Bloco 01	Bloco 02	Bloco 03	Quadra esportes	
203,44m ²	208,64m ²	123,03m ²	208,64m ²	
N° RT		Projeto	AREA TOTAL	
MGxxxxxxxxxxx		JRSTOFEL	743,75m ²	
NUMERO 014				



Cobertura
Escala: 1/200



Fachada
Escala: 1/200



VISTO

ENDEREÇO		FOLHA	
ARQUITETURA		02/02	
ENDEREÇO MG 108 Esc. Mun. Jose Candido Ferreira Povoado de São Roque Mutum - Minas Gerais - Brasil			
PROPRIETÁRIO			
PREFEITURA MUNICIPAL DE MUTUM			
R.T.			
FINALIDADE	C.G.	INFORMAÇÕES	
LEGALIZAÇÃO	S 19°58' 637" WO 41°30' 075" +3m 257m	Detalhe locação Fachada	
OBRA	Escala		
PÚBLICA	Indicada		
DATA			
Outubro / 2022			
Bloco 01	Bloco 02	Bloco 03	Quadra esportes
203,44m ²	208,64m ²	123,03m ²	208,64m ²
N° RT		Projeto	AREA TOTAL
MGxxxxxxxxxxx		JRSTOFEL	743,75m ²